

PRADA

Fall/Winter 2025 Womenswear

By Nora Comtois, Imogen Rawlings, Lila Tsendjav, Dylan Blackman

UGLY CHIC

Prada is a proponent of the *good taste of bad taste* transforming the unconventional into art and proving that fashion can be subjective, embracing both beauty and the unexpected.



Fall 2017 Womenswear

FIERCE FUSION

Prada often combines patterns and prints that typically wouldn't be matched, creating striking looks that may clash yet result in visually captivating outfits.



Fall 2003 Womenswear

BLURRED LINES

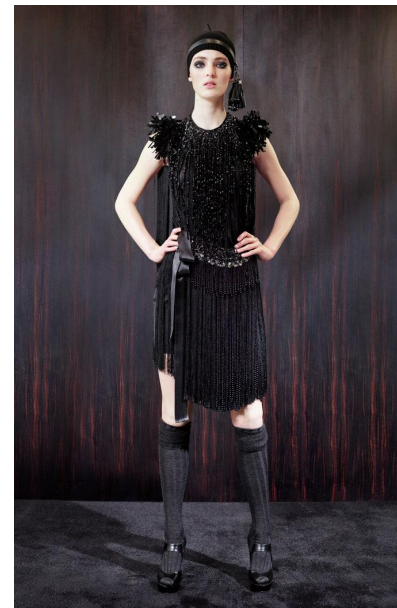
Prada blends sharp masculine tailoring with delicate feminine accents, creating a bold yet elegant looks.



Fall/Winter 1994
Womenswear

ECHOS OF ERAS

Many of the elements draw inspiration from different eras, aesthetics, and concepts, but when intertwined together, form a completely new narrative.



Pre-Fall 2009

Color Card

								
PANTONE® 11-1001 TCX White Alyssum	PANTONE® Black 6 C # 101820	PANTONE® 16-0836 TCX Rich Gold	PANTONE® 14-1118 TCX Beige	PANTONE® 17-1134 TCX Brown Sugar	PANTONE® 12-0106 TCX Meadow Mist	PANTONE® 18-1553 TCX Adrenaline Rush	<small>Nylon Brights</small> PANTONE® 15-1360 TN Shocking Orange	PANTONE® 13-0754 TCX Sunstruck

